

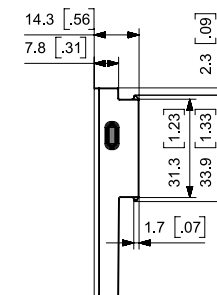
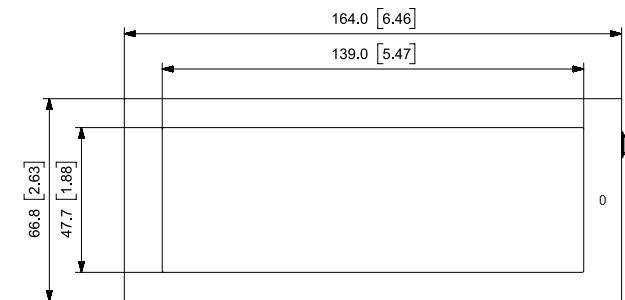
## NEWTON PRO 5.8 INCH

### Technical Details

|                          |                                            |
|--------------------------|--------------------------------------------|
| Dimensions (mm)          | 164.0 X 66.8 X 14.3                        |
| Active display area (mm) | 139.0 X 47.7                               |
| Resolution (pixel)       | 792 X 272                                  |
| Pixel density            | 144 dpi                                    |
| Display technology       | Full graphic E-ink display                 |
| Bezel Color              | Grey / White / Black / Customizable Colors |
| Pixel Color              | BWRY (Black, White, Red, Yellow)           |
| Viewing angle            | Nearly 180°                                |
| Usable pages             | Up to 7 pages                              |
| Operating temperature    | 0°C to 40°C                                |

|                          |                                                       |
|--------------------------|-------------------------------------------------------|
| Battery                  | CR2450 × 3ea                                          |
| Battery lifetime         | 10 years<br>(7.000-10.000 updates)                    |
| Encryption               | 128-bit AES                                           |
| Compliance               | FCC, IC, CE, TELEC, KC, RoHS                          |
| NFC                      | FeliCa NFC Forum Type 3                               |
| Waterproof               | IP68                                                  |
| Button                   | 1                                                     |
| LED                      | 7 Colors (Red/Green/Blue/ Yellow/Cyan/Magenta/ White) |
| ESL operating frequency  | 2,4 GHz                                               |
| Wireless firmware update | Yes                                                   |

### Technical Drawing



## NEWTON PRO 5.8 INCH



e-shelf-labels | S&K Solutions GmbH

Sailerwöhr 16 | 94032 Passau  
+49 (0) 851 / 2009 30 30

info@e-shelf-labels.com  
www.e-shelf-labels.com

a brand of   
solutions